

Appendix E: Additional charts and tables for 'Economic Growth' analysis

Figure E.1 Unemployment rate in base year (2005) in Rural Conservation Aggregates and Comparator Aggregates

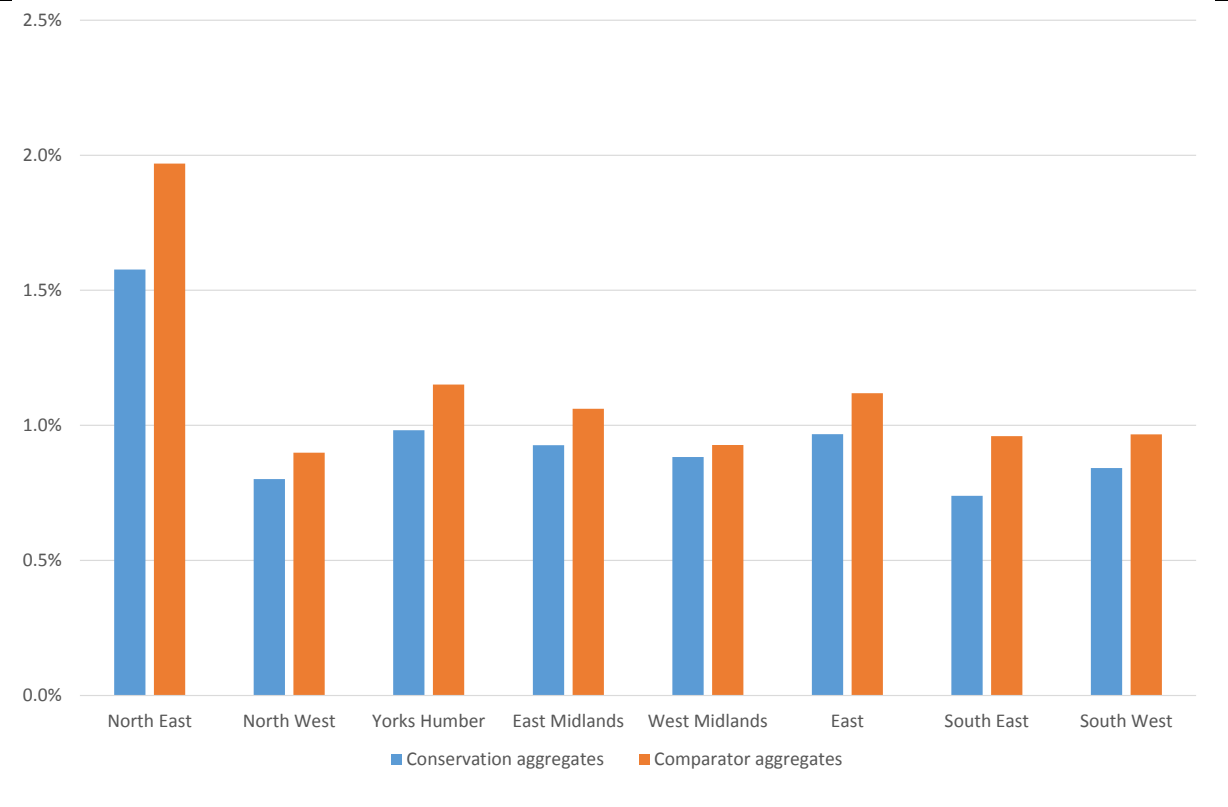


Figure E.2 Percentage point change in Unemployment claimant rate Rural Conservation Aggregates and Comparator Aggregates

Figure E.2 Percentage point change in Unemployment claimant rate Rural Conservation Aggregates and Comparator Aggregates

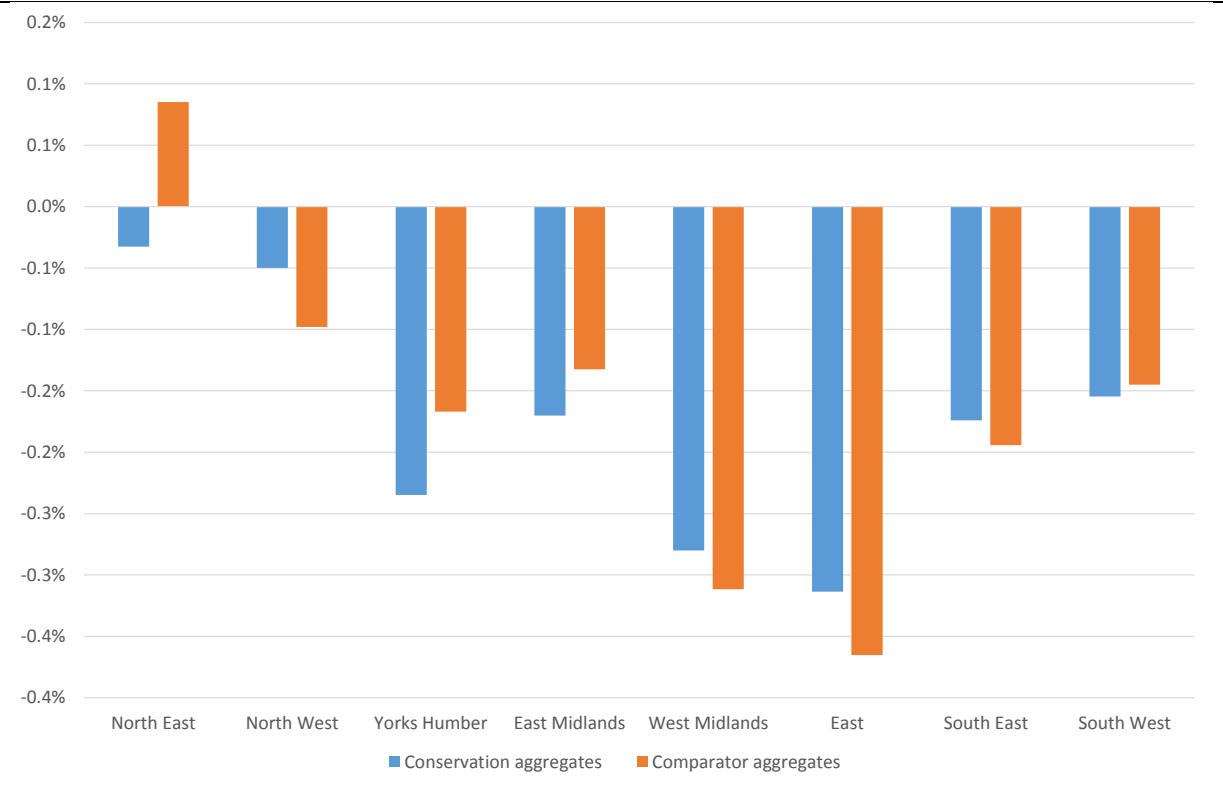


Figure E.3 Unemployment rate in base year (2005) in Urban Residential Conservation Aggregates and Comparator Aggregates

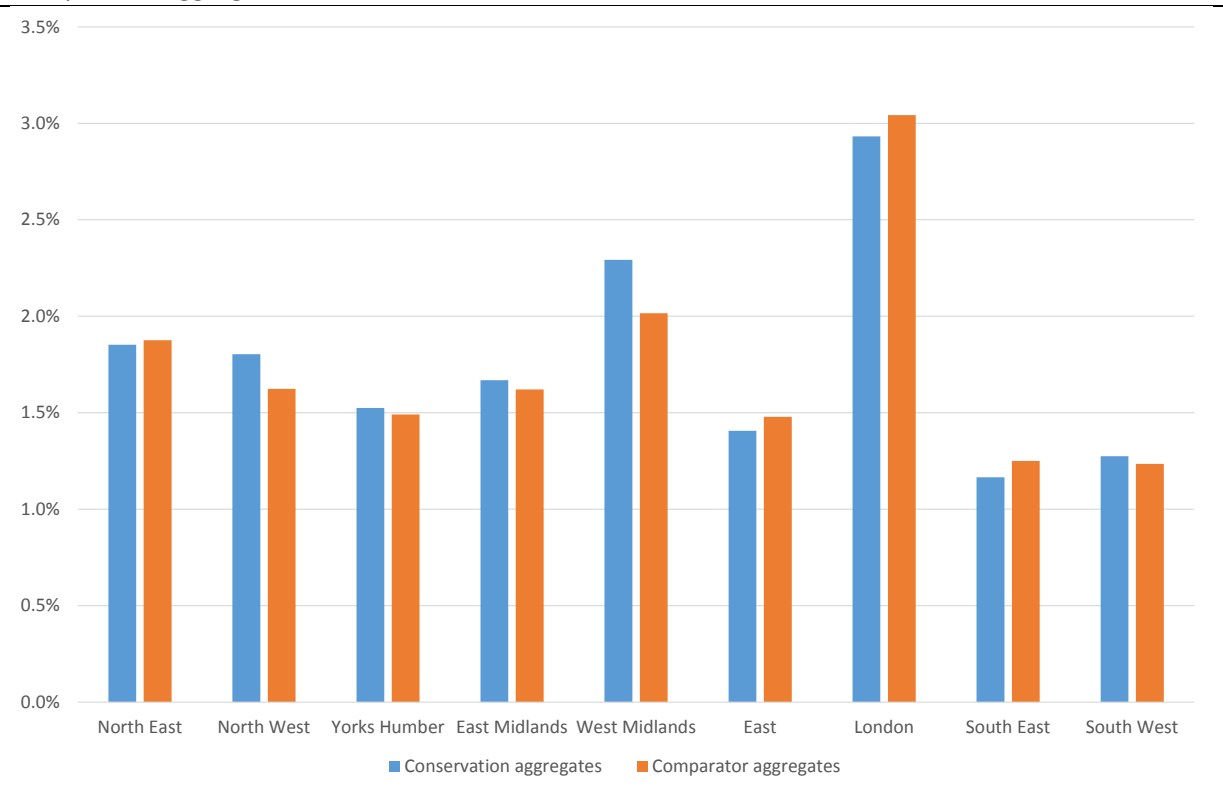


Figure E.4 Percentage point change in Unemployment claimant rate Urban Residential Conservation Aggregates and Comparator Aggregates

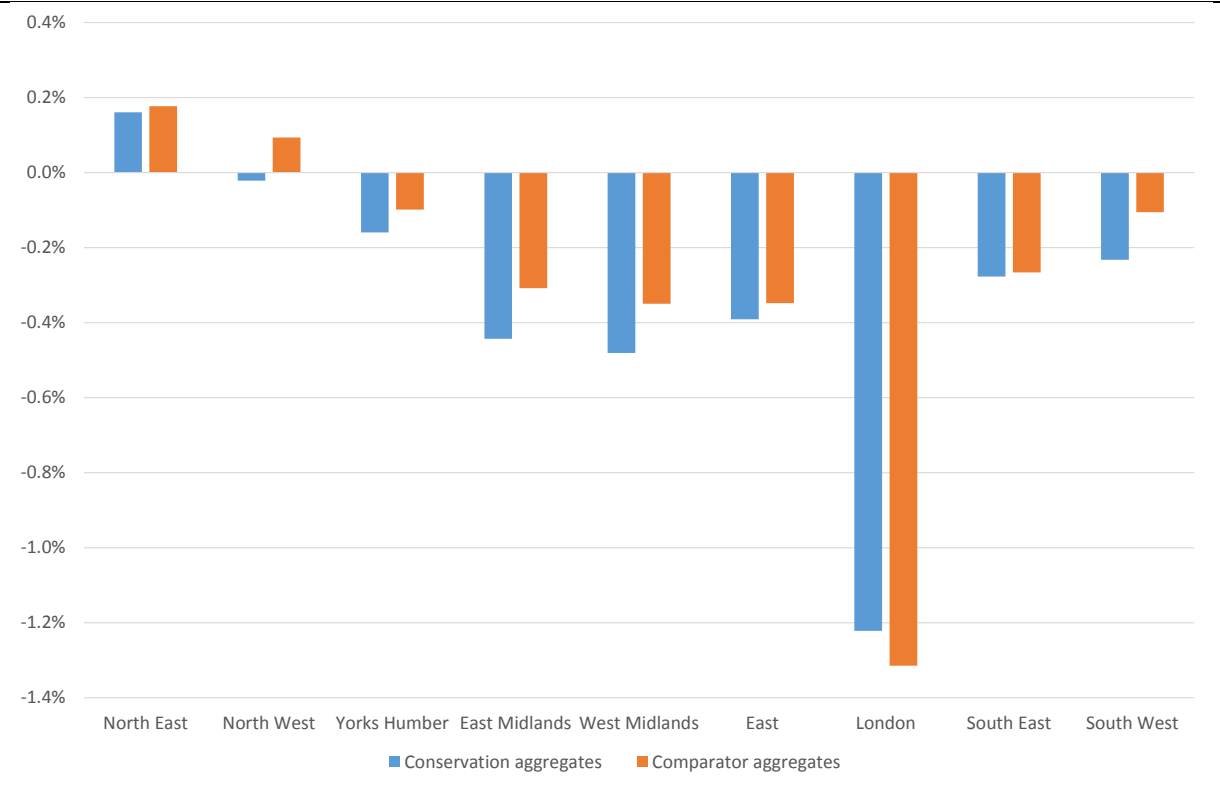


Figure E.5 Unemployment rate in base year (2005) in Town Centre Conservation Aggregates and Comparator Aggregates

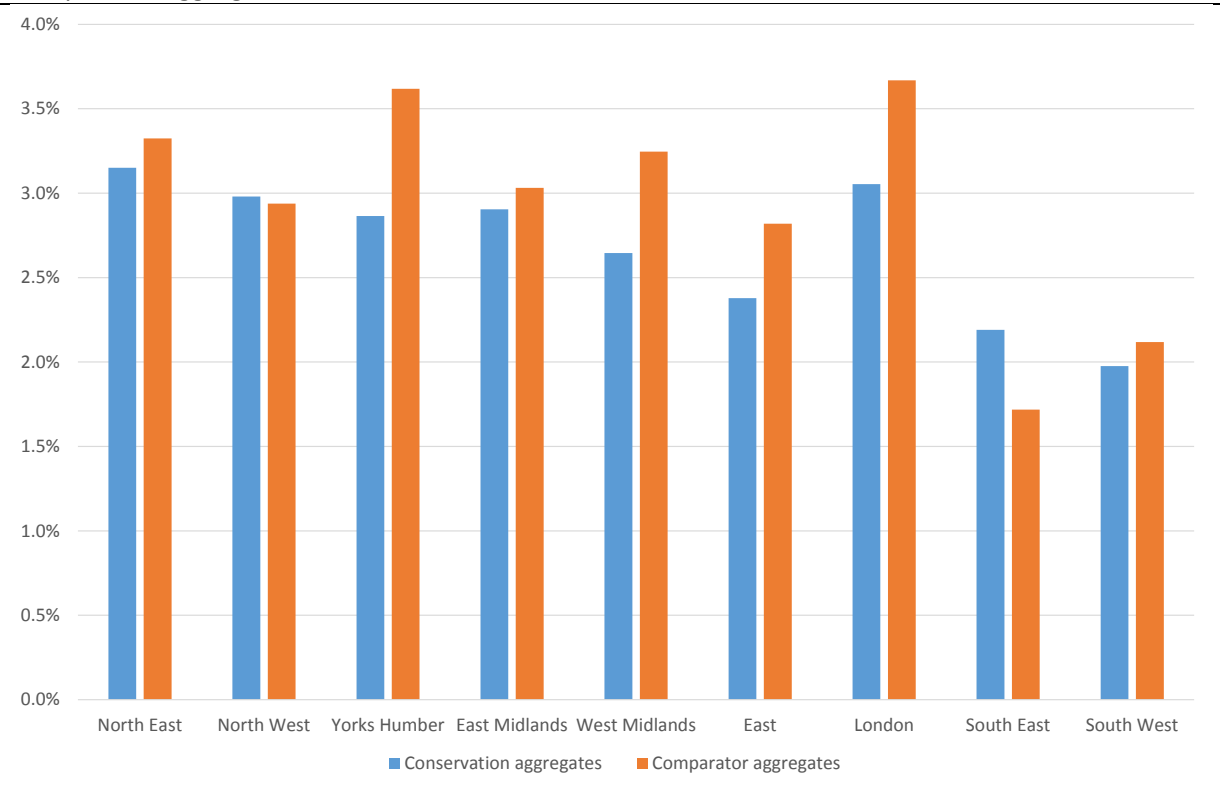


Figure E.6 Percentage point change in Unemployment claimant rate Town Centre Conservation Aggregates and Comparator Aggregates

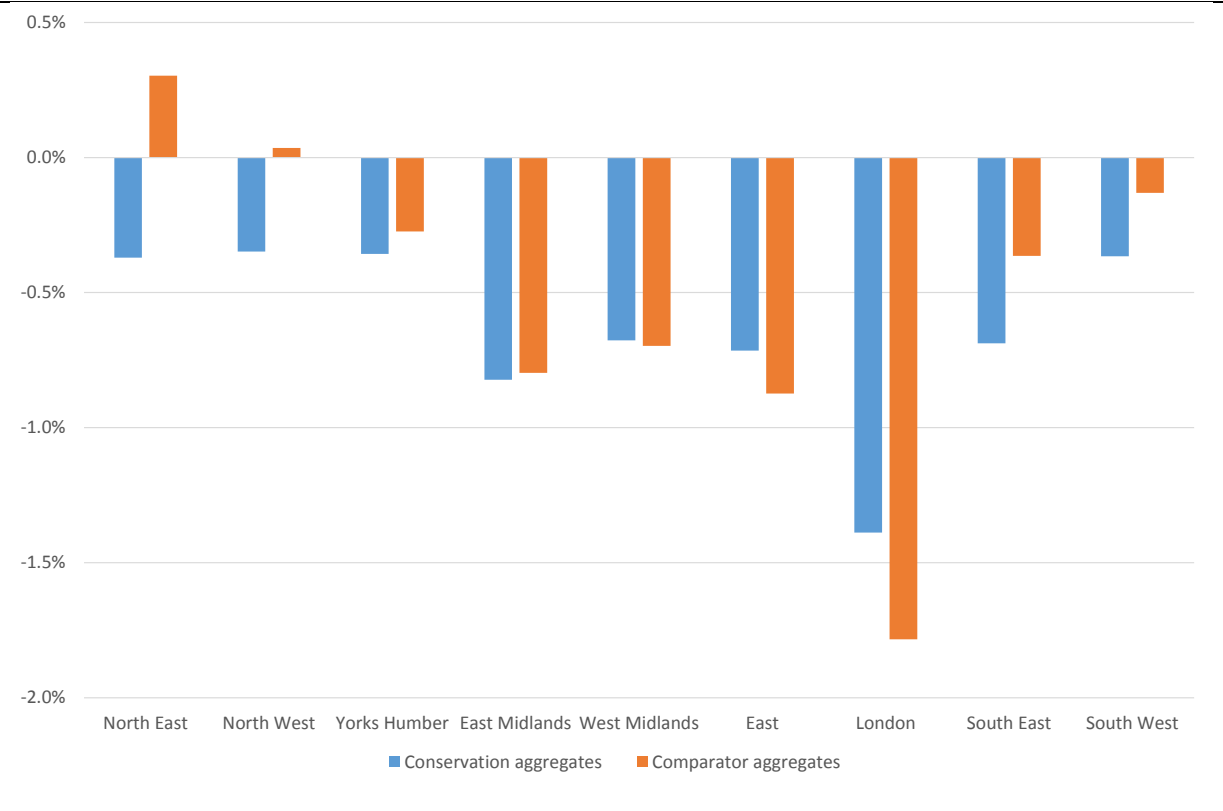
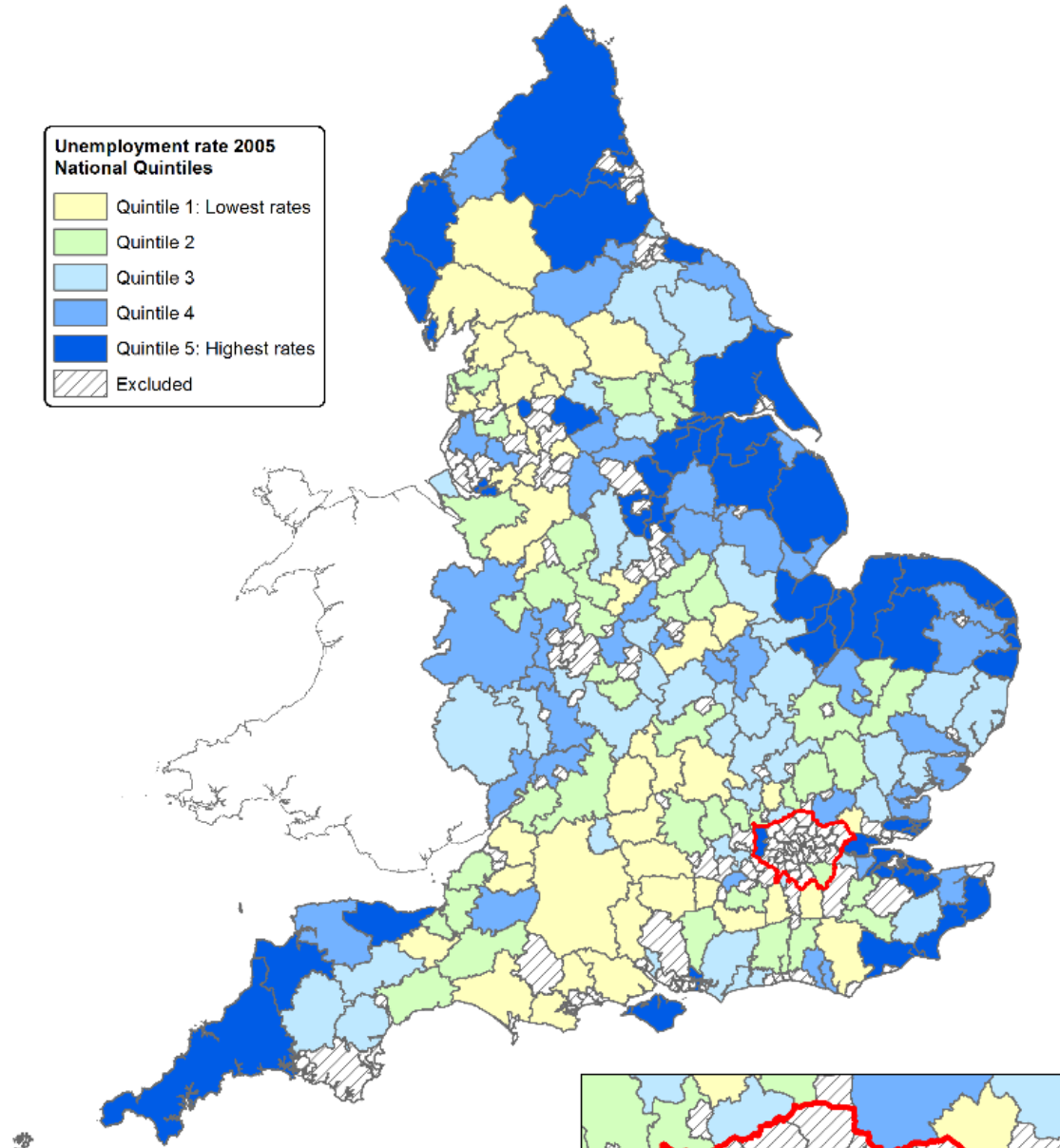
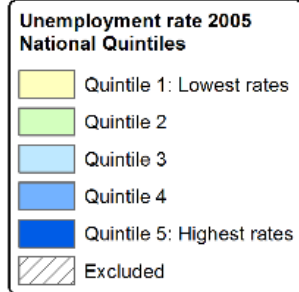


Figure E.7 Map: Unemployment rate in 2005 in Rural Conservation Aggregates (National Quintiles)

Unemployment rates in Rural Conservation Aggregates: 2005 National Quintiles



Analysis undertaken by: OCS & DEPRIVATION.ORG
 Source: Unemployment data:
 Department for Work and Pensions (DWP) Open Government Licence, Crown copyright.
 Source: Population denominators:
 Office for National Statistics (ONS) Open Government Licence, Crown copyright.
 Source: Boundaries:
 Office for National Statistics, 2011 Census: Digitised Boundary Data
 (England and Wales) [computer file]. UK Data Service Census
 Support. Downloaded from: <https://borders.ukdataservice.ac.uk/>
 This information is licensed under the terms of the Open Government Licence
 [<http://www.nationalarchives.gov.uk/doc/open-government-licence/version/3/>]

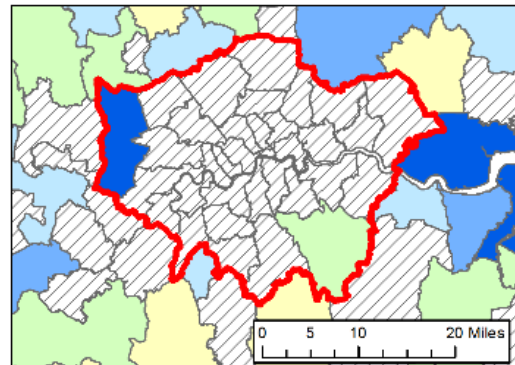
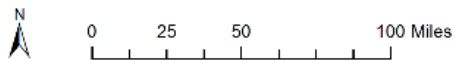


Figure E.8 Map: Unemployment rate in 2005 in Urban Residential Conservation Aggregates (National Quintiles)

Figure E.8 Map: Unemployment rate in 2005 in Urban Residential Conservation Aggregates (National Quintiles)

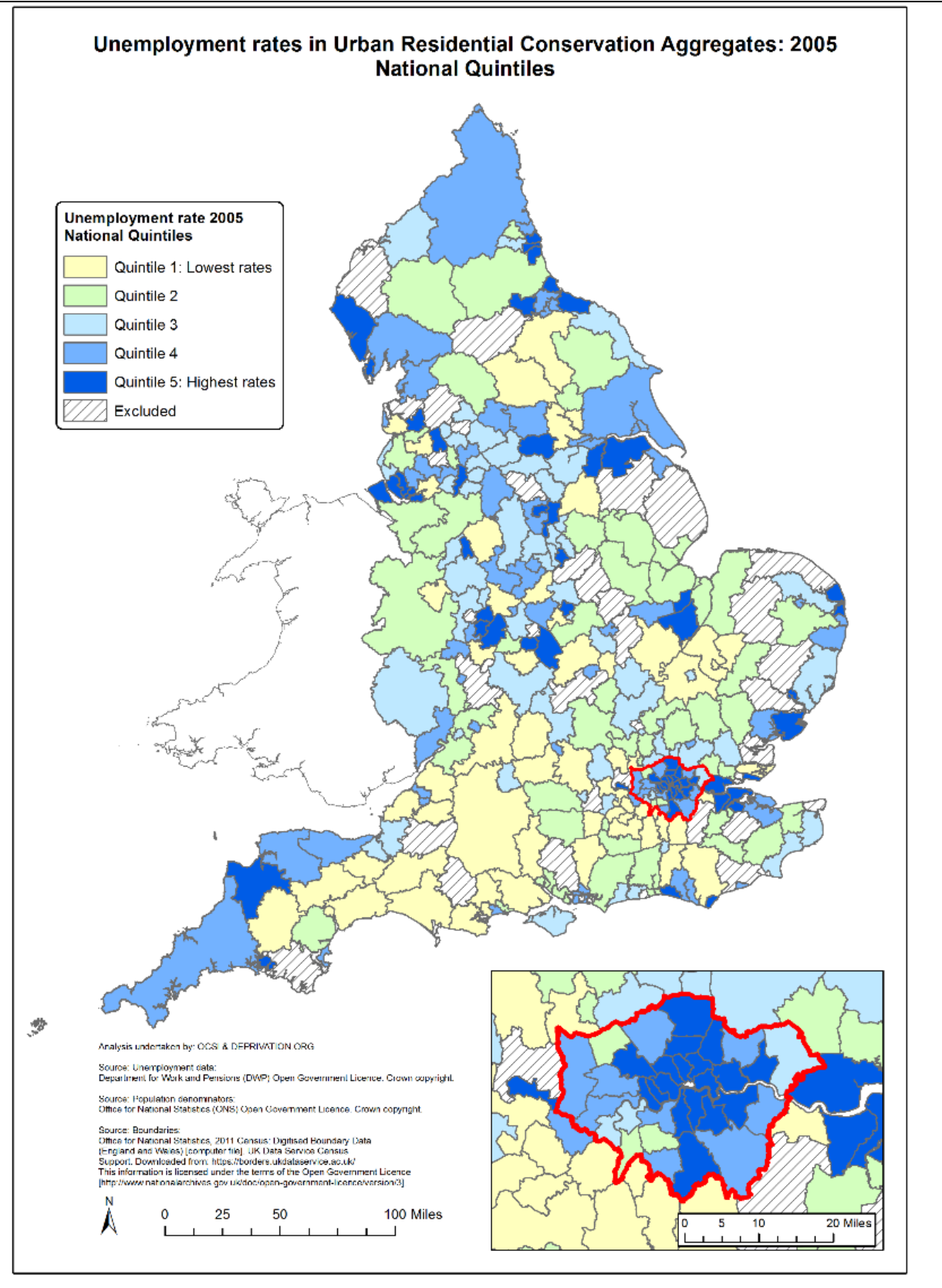


Figure E.9 Map: Unemployment rate in 2005 in Town Centre Conservation Aggregates (National Quintiles)

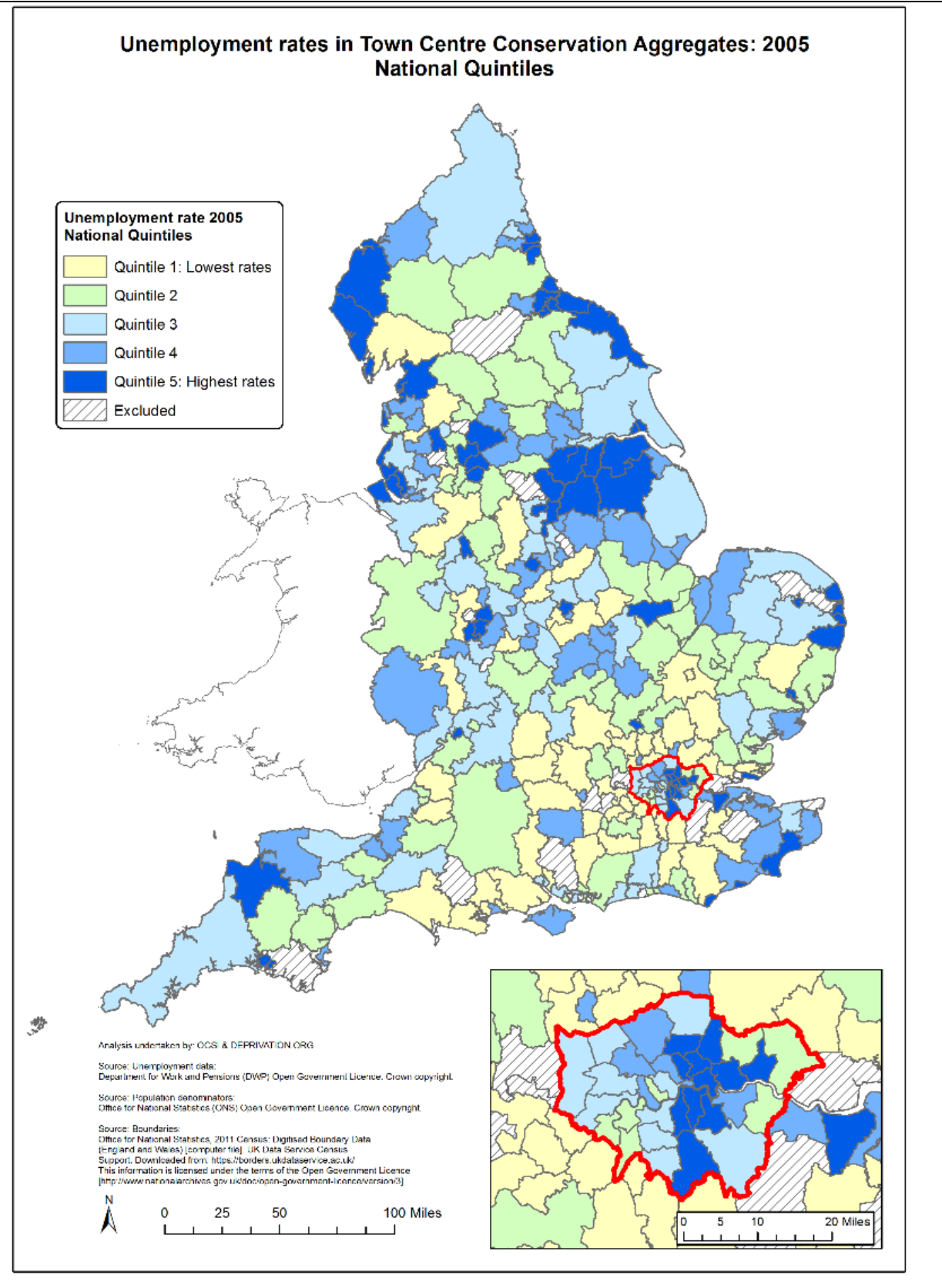


Figure E.10 Box plot: Distribution of Local Authority unemployment benefit claimant rates across Conservation Aggregates and Comparator Aggregates by category

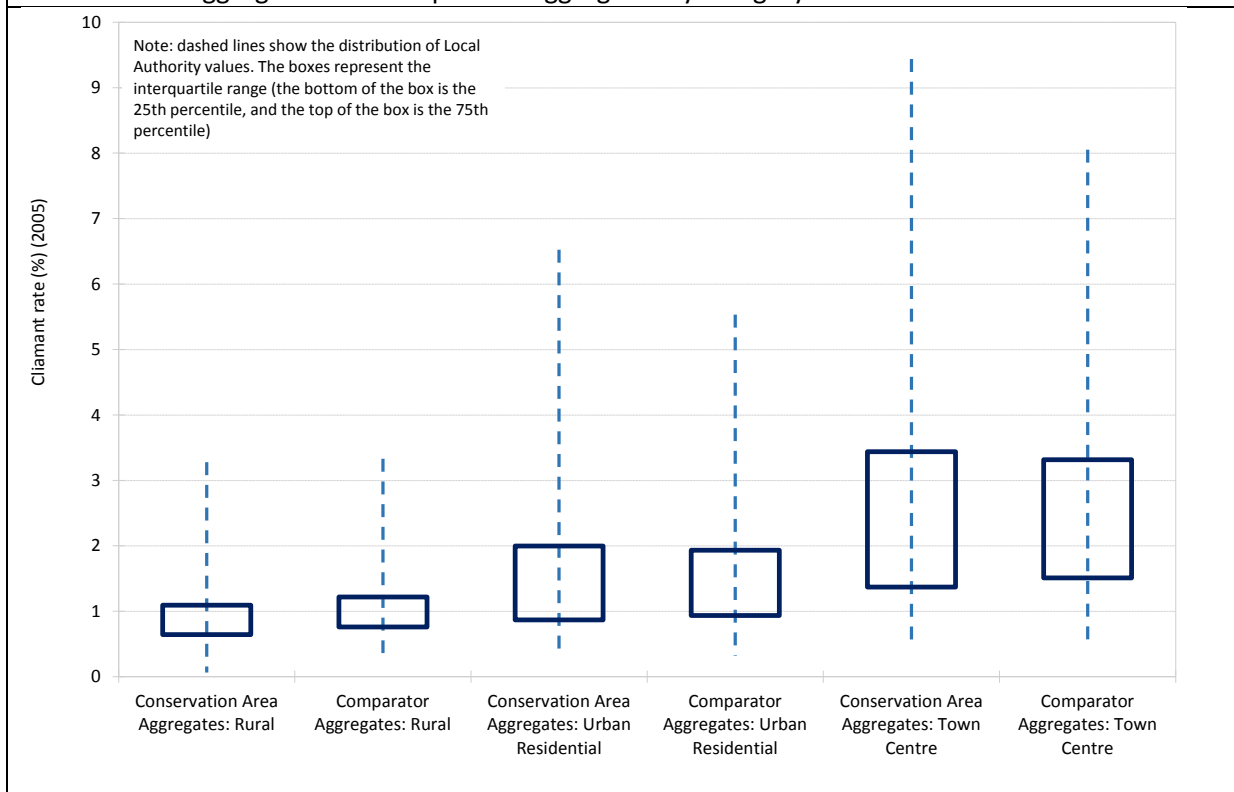


Figure E.11 Box plot: Difference between Conservation and Comparator Aggregate Unemployment benefit score at a baseline point in time (all categories)

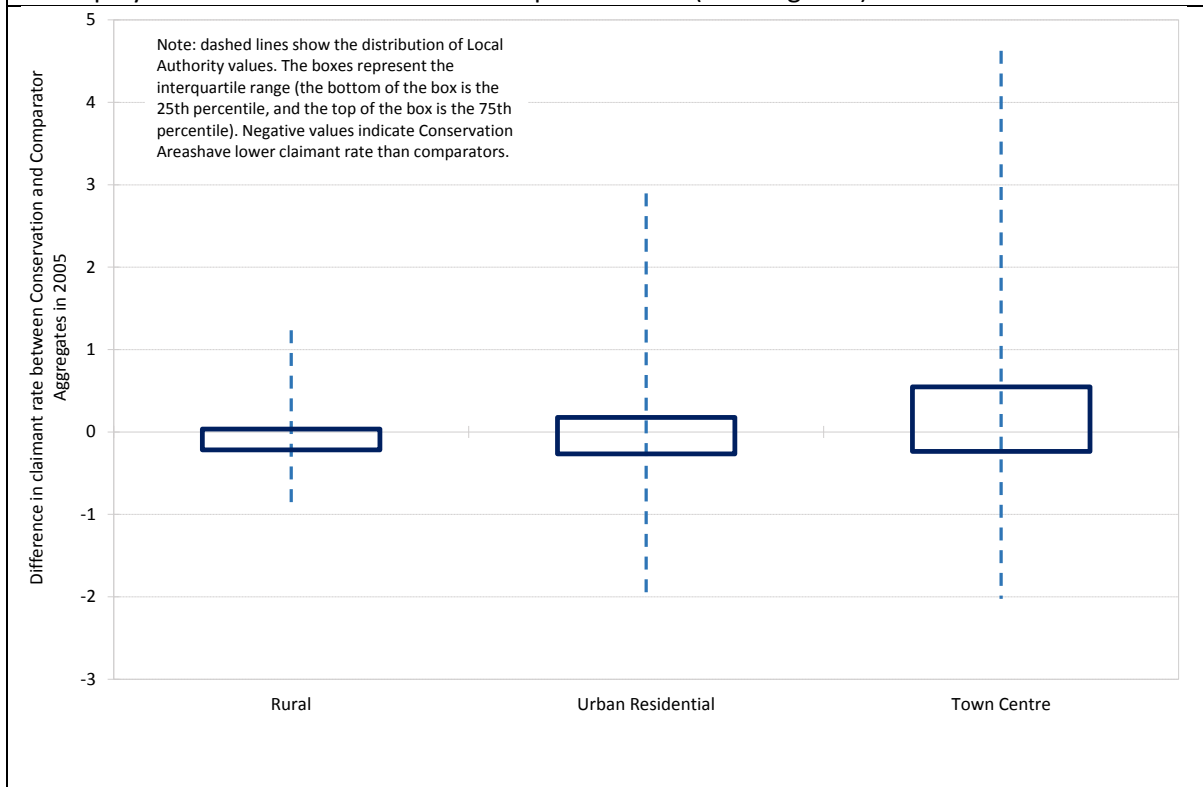


Figure E.12 Bar Chart: Difference in Unemployment benefit claimant rate between Rural Conservation and Comparator Aggregates in 2005

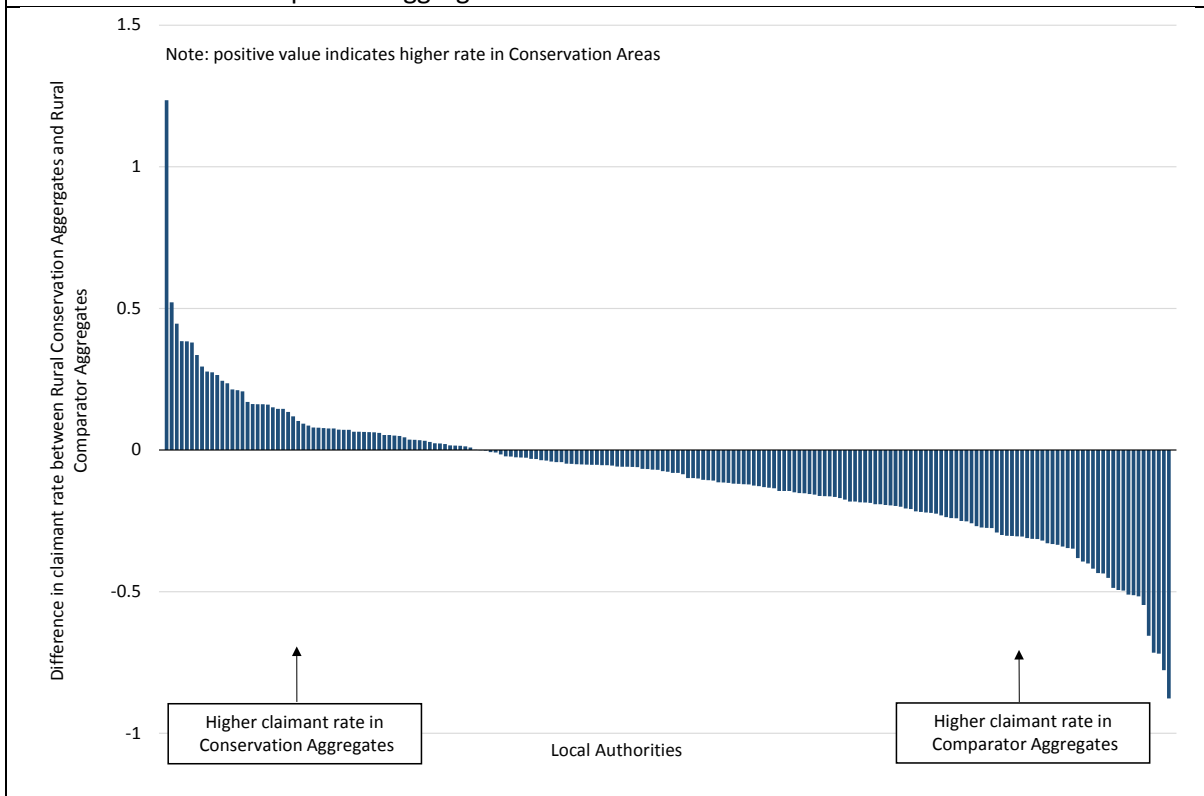


Figure E.13 Bar Chart: Difference in Unemployment benefit claimant rate between Urban Residential Conservation and Comparator Aggregates in 2005

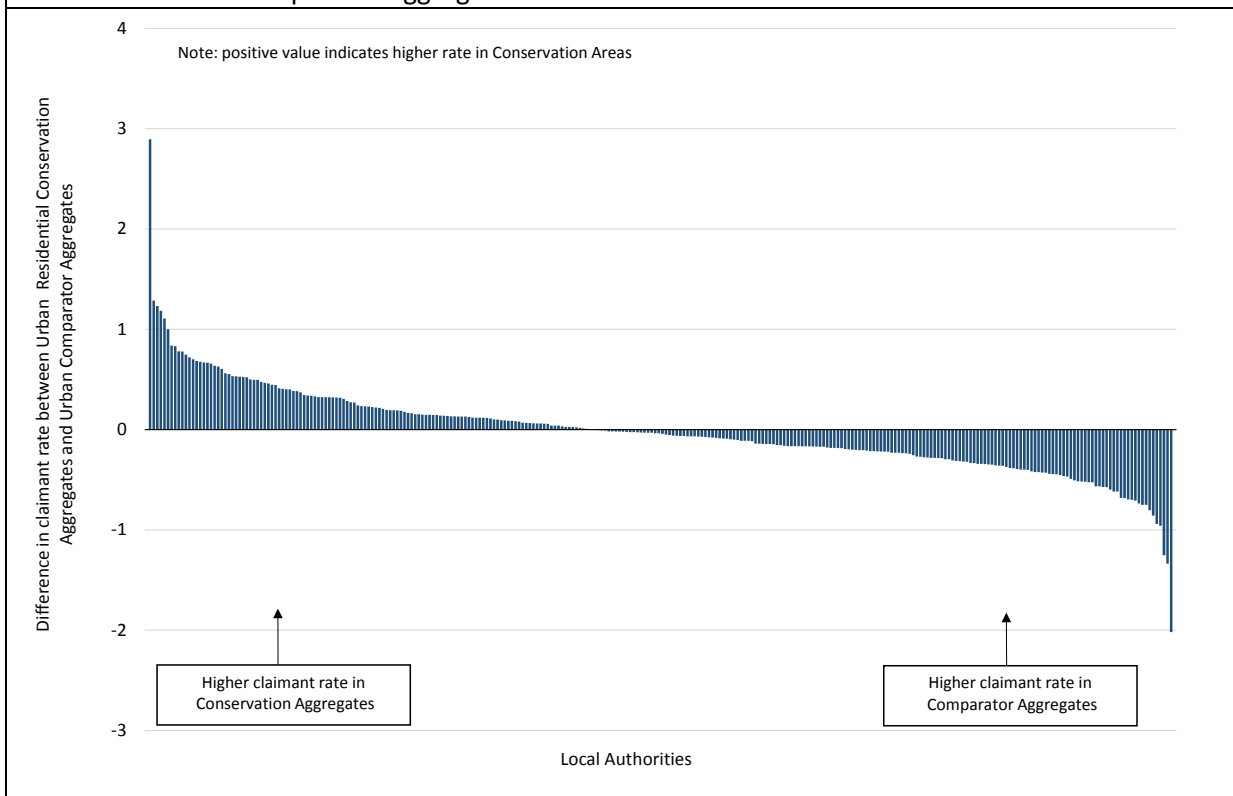


Figure E.14 Bar Chart: Difference in Unemployment benefit claimant rate between Town Centre Conservation and Comparator Aggregates in 2005

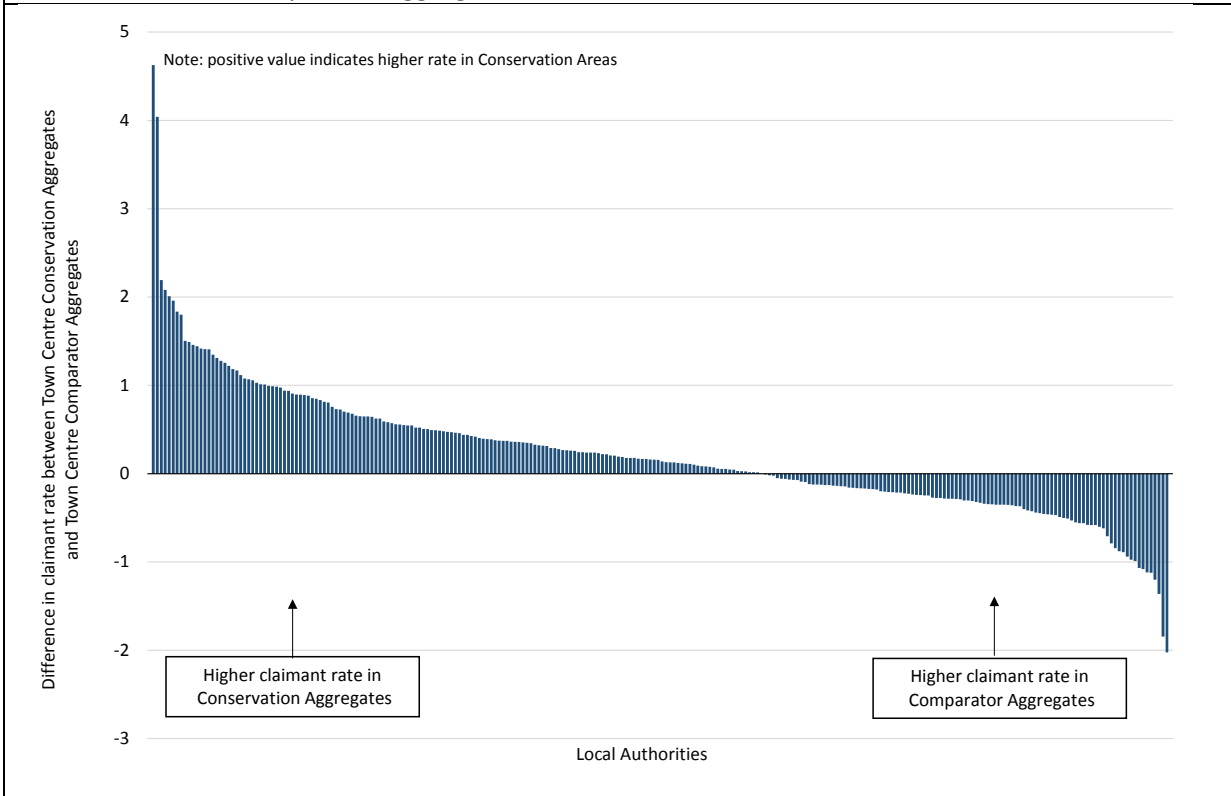


Figure E.15 Box plot: Distribution of unemployment rates in Conservation Aggregates in 2005 and 2016 (all categories)

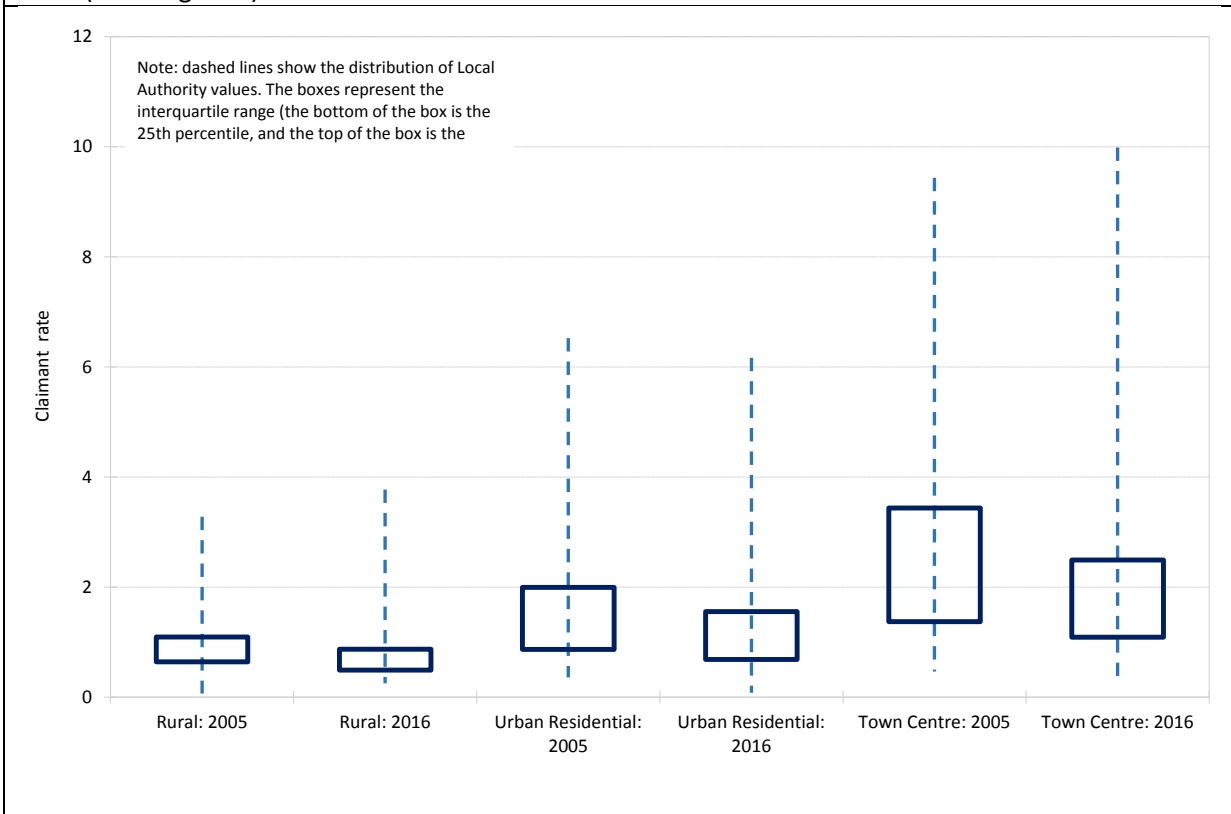


Figure E.16 Box plot: Distribution of Local Authorities in terms of relative performance of their Conservation Aggregates vs Comparator Aggregates in terms of change in claimant rate (2005-2016)

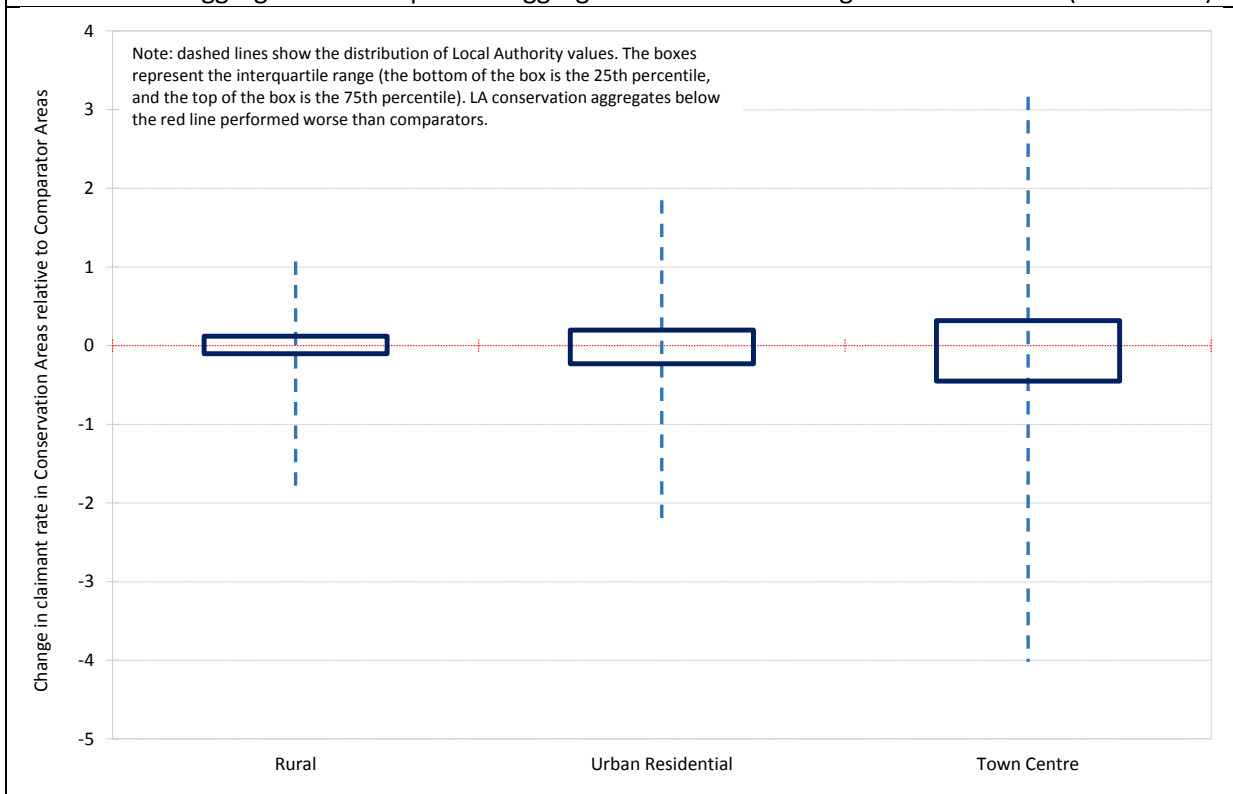


Figure E.17 Scatterplot: Comparing direction of travel and relative performance of Rural Conservation Aggregates between 2005 and 2016

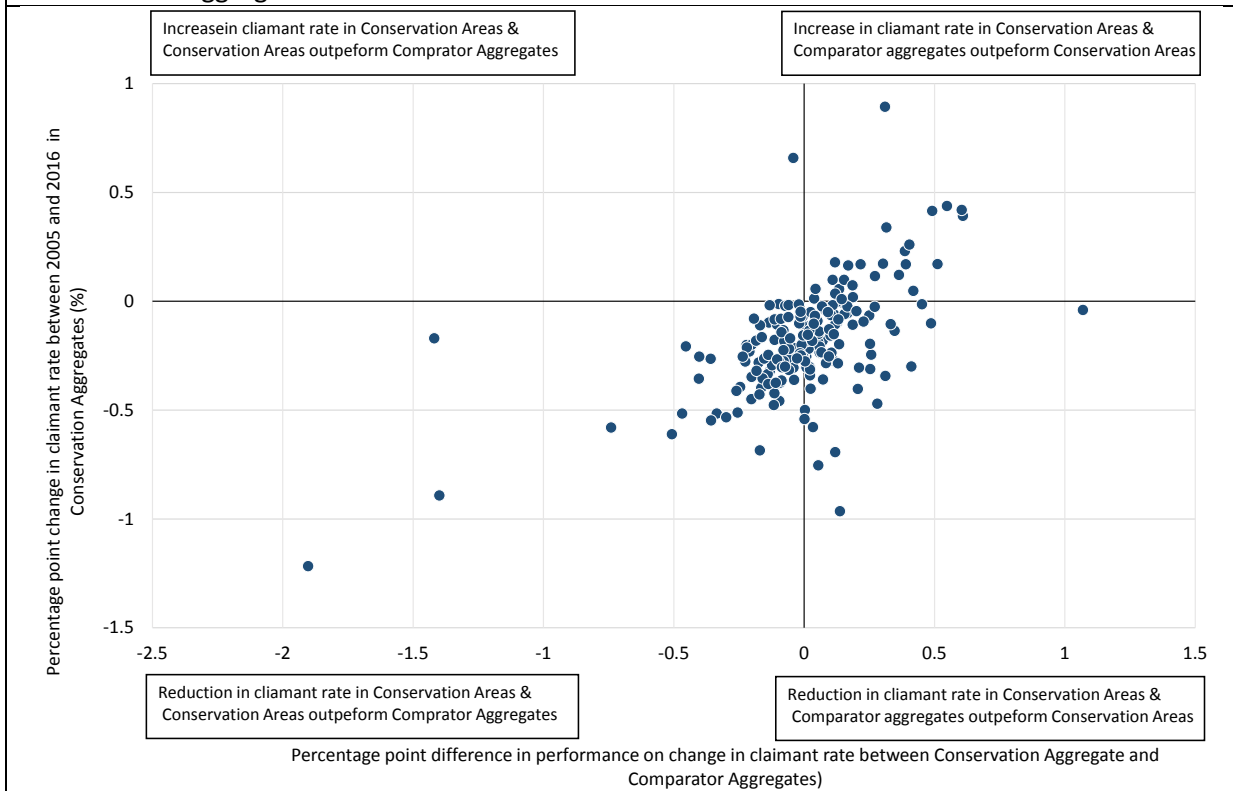


Figure E.18 Scatterplot: Comparing direction of travel and relative performance of Urban Residential Conservation Aggregates between 2005 and 2016

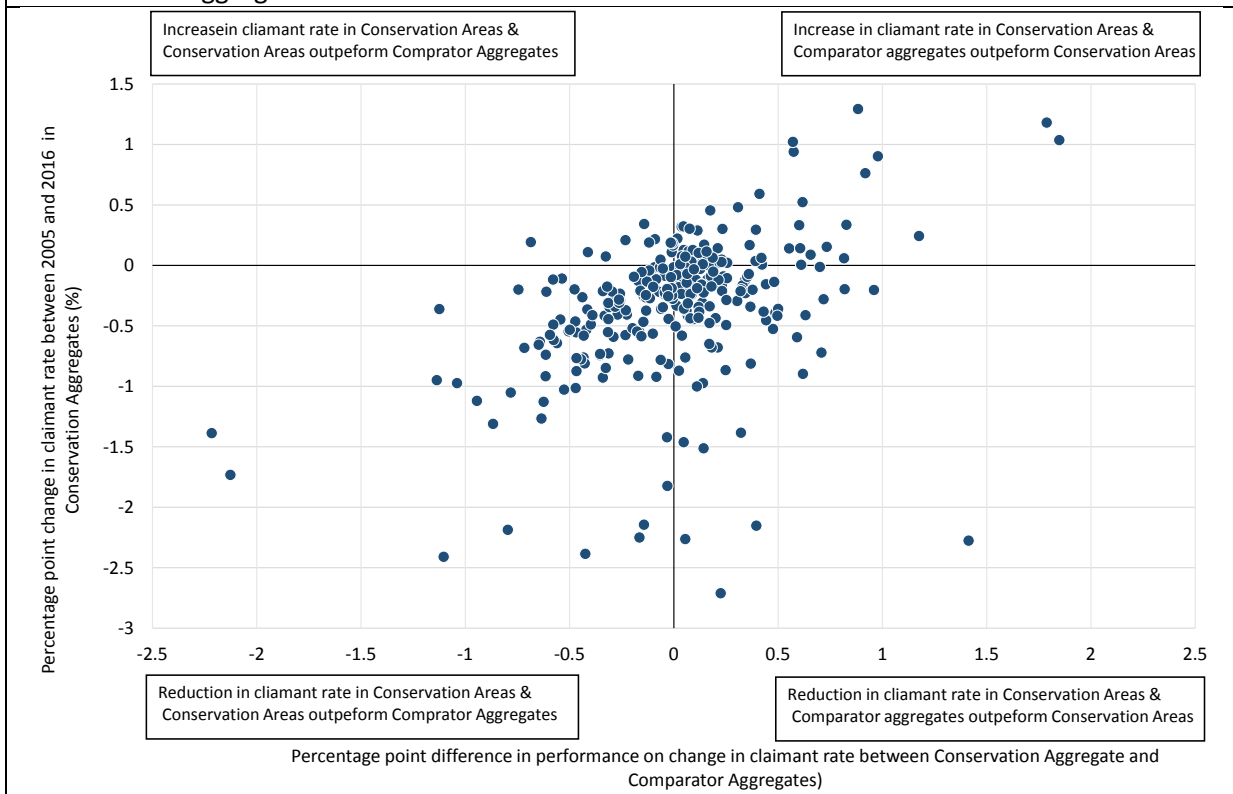


Figure E.19 Scatterplot: Comparing direction of travel and relative performance of Town Centre Conservation Aggregates between 2005 and 2016

